

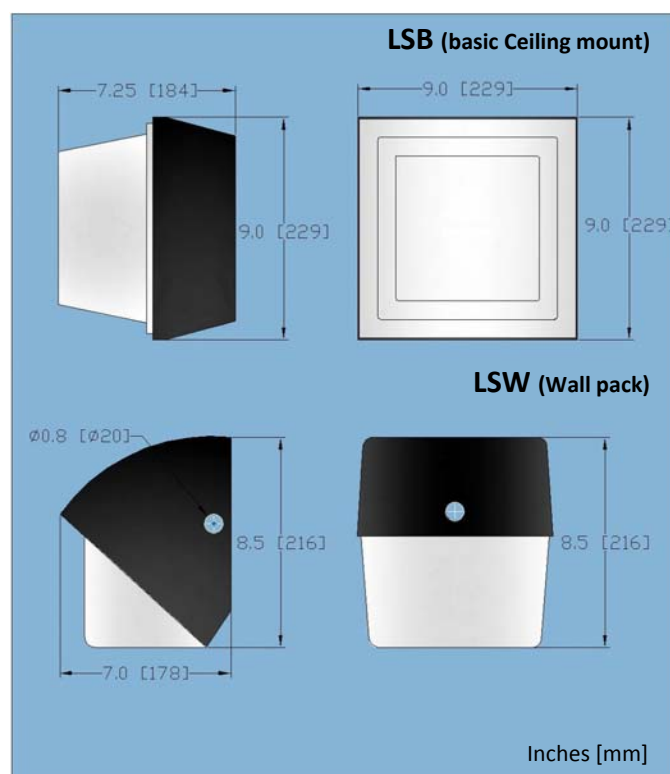
# Shelter Series Light

**SolarOne**<sup>®</sup>  
Lighting



SolarOne's Shelter Series lights provide high-brightness LED lighting to all types of shelters. Installs quickly and easily and unlike grid-tied lights, no trenching or pavement cutting is required. Ideal for retrofitting existing shelters. Every SolarOne system uses So\*Bright Technology to provide lighting that is brighter, more efficient, more versatile and more reliable than the competition.

Choose from a ceiling mounted fixture (LSB) or wallpack fixture (LSW).



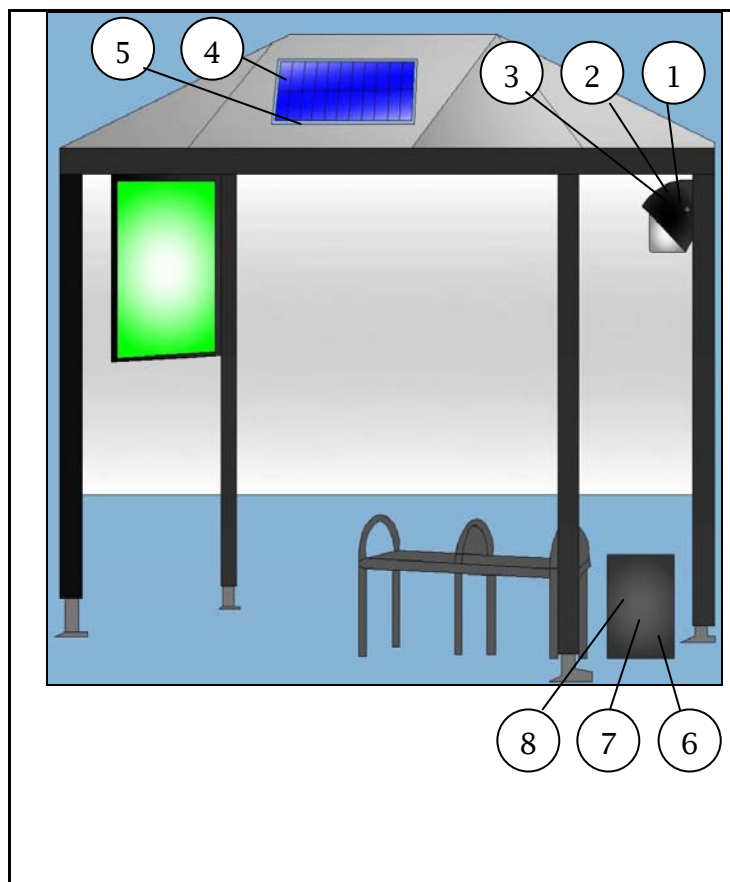
## Features

- Wide beam illumination lights all the way to the curb
- Dozens of timing and dimming options
- Each fixture is 600 lumens and 50,000 hour bulb lifetime
- Packages available with one to three light fixtures
- Three standard Power Packages available
- Cast aluminum light fixture with powder coat finish
- Standard roof-mounted solar panel
- Optional pole mounted panel for better energy collection
- Motion detector option
- Adjust timing and Light Levels with Remote Control

All SolarOne Systems feature So\*Bright™ Technology, making them the "Smartest Lights in the World." Only So\*Bright manages brightness and adapts to low power conditions to ensure that you never leave your facility in the dark.



## Anatomy of a Shelter Light



**1. White LED Lamps** –The lamps offer high brightness, high color rendering, and 50,000hr life at 70 lumens per watt. One, two or three fixtures may be used depending on the size of the shelter and light level desired.

**2. LED Driver** – Constant current driver precisely controls light levels with up to 256 digital states. One driver per lamp.

**3. Fixture** – Choose wall or ceiling mount. Die cast aluminum construction with polycarbonate refractor. Holds 1 lamp and driver.

**4. Solar Panel** – Poly-crystalline solar panel in 50, 80 or 120watts. Twenty year power output warranty.

**5. Panel Mounting** – Aluminum Z-bracket for mounting to any shelter roof. Optional pole mounting available.

**6. Battery Enclosure** –NEMA 3R rainproof, vented, aluminum enclosure with cover and mounting holes and padlock hasp. Mount to the wall, under a bench or up in the ceiling.

**7. Batteries** – One or two sealed 116amp-hour, 12volt, spill-proof, maintenance free AGM batteries with fused battery harness.

**8. So\*Bright Controls** – The smartest, most versatile solar lighting controls available. Set timing, light-levels, and other features using a remote control.

**9. Motion Detector (Optional)** – Optional vandal proof motion detector is available. Brings the lights from Dim to Full.

**Accessories:**

- Ground Rod Kit
- Vandal proof Motion Detector
- Data Logger

**For more information see:**

- High Lumen LED Lamp Spec Sheet
- Power Package Spec Sheet
- So\*Bright Controls Spec Sheet

## How to Specify Fixture

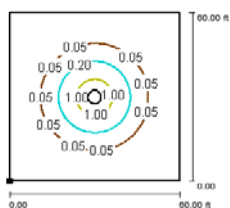
**LSB** - - **Energy Package**  
 Series - Lamping

Series		Lamping		Energy Package	
<b>LSB</b>	Basic Ceiling mount fixture	<b>1-HL600</b>	Single LED Lamp Fixture	<b>Econ</b>	Economy, 50W PV, 116Ahr battery
<b>LSW</b>	Wallpack fixture	<b>2-HL1200</b>	Two LED Lamp Fixtures	<b>Mid</b>	Midsized, 80W PV, 116Ahr battery
		<b>3-HL1800</b>	Three LED Lamp Fixtures	<b>Super</b>	Super, 120W PV, 232Ahr battery

*The pole is specified separately. Please see pole selection guide.*

## Photometry

**LSB-1-HL600** (mounting height= 10ft)



**LSW-1-HL600** (mounting height=8ft')

