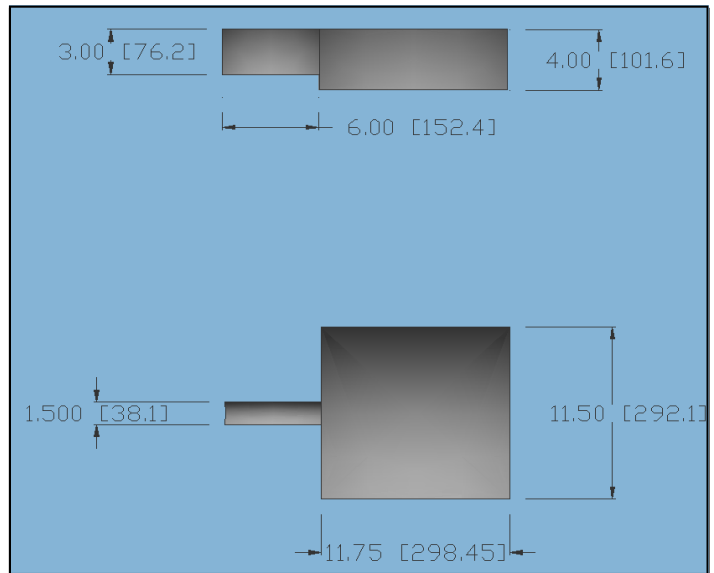




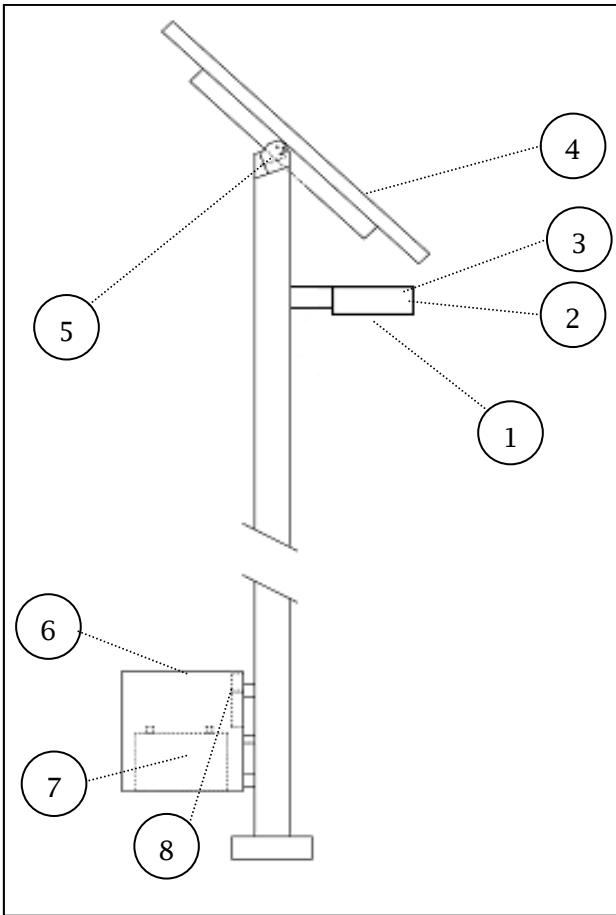
SolarOne's® Shoebox Series Overhead Light (LOS) is designed to produce highly efficient white light in a controlled distribution pattern. This results in exceptional uniformity and improved spacing. The LOS is suitable for a large variety of applications, including: pathways, sidewalks, waiting areas, low-security parking lots, and campuses.

The system includes solar panel, two-axis adjustable panel mounting system, Shoebox style fixture, one to four high-efficiency LED lightbars, NEMA 3R battery enclosure, 116 or 232 amp-hour sealed battery, SO-Bright™ advanced lighting controls with Max Power Tracking. Fitting can be reconfigured to complement a variety of applications, pole types and sizes.



Standard Configurations

LOS	-	2HL750	-	2MCD	-	MPT	-	12 V	-	P130	-	TP	-	2118CA	-	EL2	-	R5.0	-	BLK	-	EGW
Series		Lamps		Driver		Control(s)		Voltage		Panel(s)		Mounting		Battery		Enclosure		Pole Fitting		Finish		Options
		LOS-1HL750-MCD-MPT-12V-P50-TP-B118CA-EM1										LOS-3HL750-3MCD-MPT-12V-P50-TP-B118CA-EM1										
		LOS-1HL750-MCD-MPT-12V-P80-TP-B118CA-EM1										LOS-3HL750-3MCD-MPT-12V-P80-TP-B118CA-EM1										
		LOS-1HL750-MCD-MPT-12V-P130-TP-2B118CA-EL2										LOS-3HL750-3MCD-MPT-12V-P130-TP-2B118CA-EL2										
												LOS-3HL750-3MCD-2MPT-12V-2P95-TP-2B118CA-EL2										
		LOS-2HL750-2MCD-MPT-12V-P50-TP-B118CA-EM1										LOS-3HL750-3MCD-2MPT-12V-2P80-TP-4B118CA-EX4										
		LOS-2HL750-2MCD-MPT-12V-P80-TP-B118CA-EM1										LOS-3HL750-3MCD-2MPT-12V-2P95-TP-4B118CA-EX4										
		LOS-2HL750-2MCD-MPT-12V-P130-TP-2B118CA-EL2																				
		LOS-2HL750-2MCD-MPT-12V-P130-TP-4B118CA-EX4										LOS-4HL750-4MCD-MPT-12V-P80-TP-B118CA-EM1										
		LOS-2HL750-2MCD-2MPT-12V-2P95-TP-4B118CA-EX4										LOS-4HL750-4MCD-MPT-12V-P130-TP-2B118CA-EL2										
												LOS-4HL750-4MCD-2MPT-12V-2P95-TP-2B118CA-EL2										
												LOS-4HL750-4MCD-2MPT-12V-2P95-TP-4B118CA-EX4										



**1. White LED Lamps** –The lamps offer high brightness, high color rendering, and 50,000 hr life at 70 lumens per watt., 750, 1500, 2250 or 3000 lumens. Lamps are full cut-off, producing 0 lumens above 90 degrees and less than 10% light output between 80 and 90 degrees.

**2. LED Driver** – Constant current driver precisely controls light levels with up to 256 digital states. One driver per lamp.

**3. LOS Fixture** – Die-formed aluminum construction. Holds from 1 to 4 lightbars.

**4. Solar Panel** – Poly-crystalline solar panel in 50, 80, 95 or 130 watts. Twenty year power output warranty.

**5. Panel Mounting** – Aluminum fixture allows 360° horizontal panel rotation using stainless ¼-20 allen-head set screws and vertical angles from horizontal (equatorial latitudes) to 70° (northern latitudes).

**6. Battery Enclosure** –NEMA 3R rainproof, vented, aluminum enclosure with cover, mounting bracket and padlock hasp.

**7. Batteries** – One or two sealed 118 amp-hour, 12volt, spill-proof, maintenance free AGM batteries with fused battery harness.

**8. SO-Bright™ Controls** – The smartest, most versatile solar lighting controls available. Set timing, light-levels, and energy management options using a wireless remote control.

**Fixture EPA:** 0.493 sq-ft (0.05 sq-m)

**Fixture Weight:** 10 lbs (4.54 kg)

**Accessories:**

Grounding Kit

Vandal proof Motion Detector

Data Logger

**For more information see:**

High Lumen LED Lamp Spec Sheet

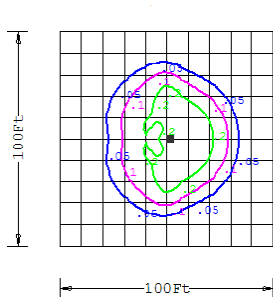
Power Package Spec Sheet

SO-Bright™ Controls Spec Sheet

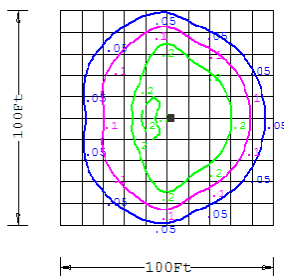
Pathway photometric plots

Poles Spec Sheet

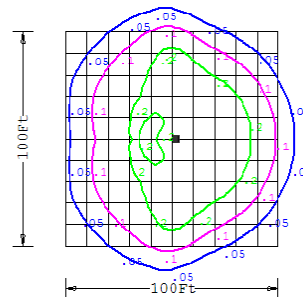
Photometrics



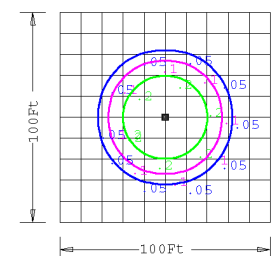
LOS - HL750T3  
(mounting height = 12')



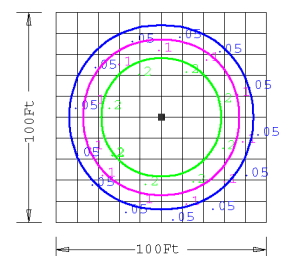
LOS - 2HL750T3  
(mounting height = 16')



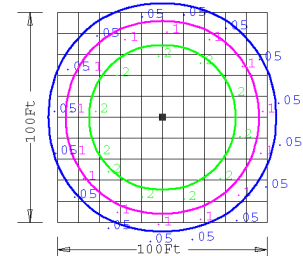
LOS - 3HL750T3  
(mounting height = 20')



LOS - HL750T5  
(mounting Height = 12')



LOS - 2HL750T5  
(mounting Height = 16')



LOS - 3HL750T5  
(mounting Height = 20')